



# Discover Pfizer

PSSM Lake Forest

Pharmaceutical Sciences Small Molecule (& more)



Breakthroughs that  
change patients' lives

# A Center of Excellence for Parenteral Drug Development

More than **700 scientists and other professionals** at Lake Forest are critical to Pfizer's mission to be the premier innovative biopharmaceutical company. Colleagues work in close collaboration with research teams across the globe.

**Have you or a family member ever gone to the hospital? Our products probably helped with treatment!**



## **Our Purpose:**

Breakthroughs  
that change  
patients' lives

# Worldwide Research, Development and Medical

At Pfizer, we apply science and our global resources to bring treatments and therapies to people all over the globe. Every day, we work to advance wellness, prevention, treatments and cures that challenge the most feared diseases of our time. For more than 150 years, we've worked to make a difference for all who rely on us.

Research and Development is at the heart of fulfilling Pfizer's purpose as we work to translate advanced science and technologies into therapies that matter for patients in need.

We focus our resources in disease areas with the best chance of scientific and commercial success:



**Oncology**



**Internal Medicine**



**Devices**



**Inflammation  
& Immunology**



**Rare Disease**



# A lot goes into Making a Medicine

The story of bringing a medicine to life is no different than any other process of creation.

It requires innovation, imagination, and restless perseverance in the face of obstacles both expected and unforeseen.



# Diversity & Inclusion

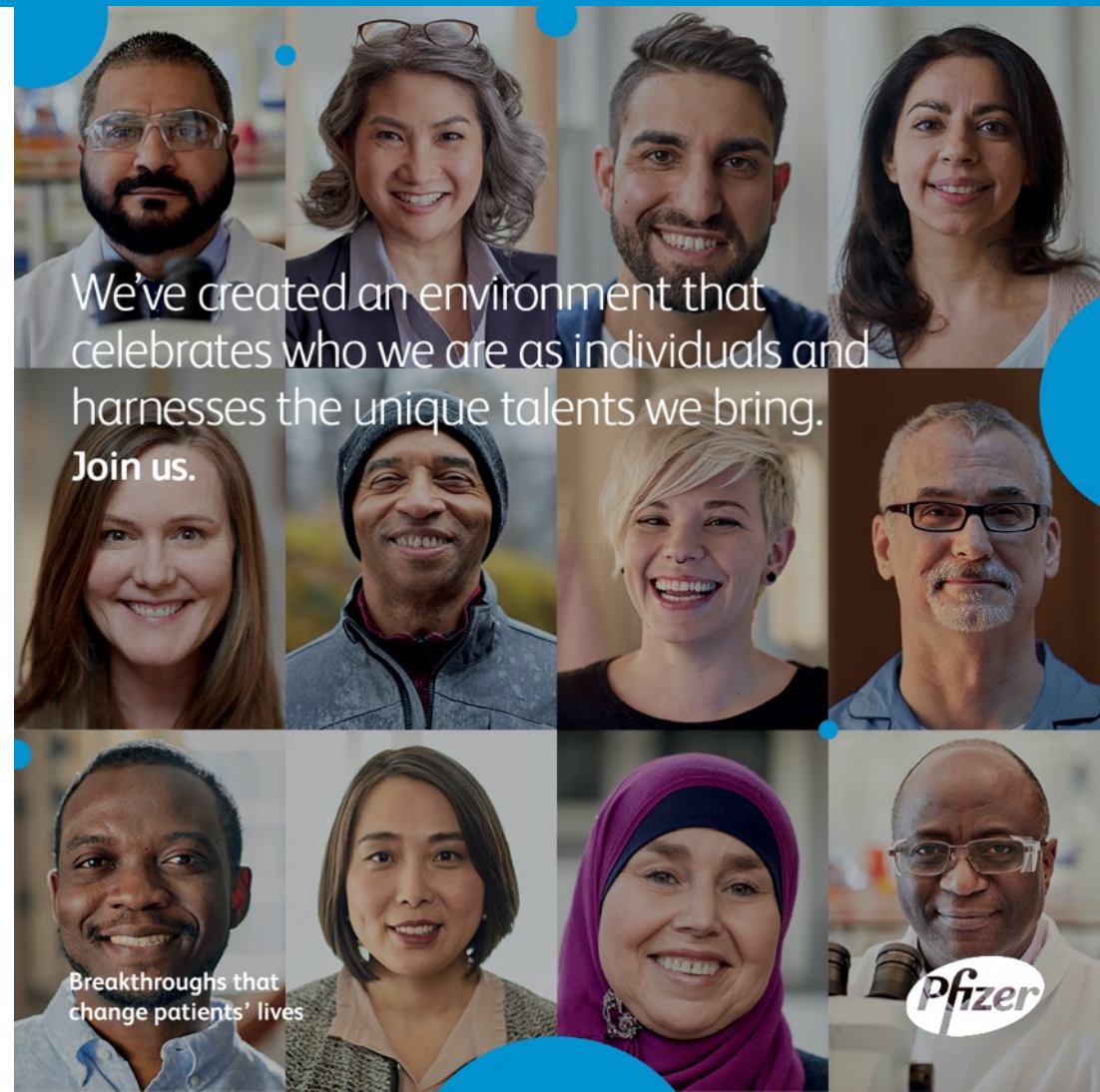
At Pfizer, we strive to be as diverse as the patients and communities we serve.

We realize that means not just attracting the best and brightest talent. But also ensuring our colleagues can thrive in an environment and culture where we champion Diversity and Inclusion every day, around the world.

## **Equity runs through everything we do.**

We want all patients to have equal access to healthcare, and accessible and affordable drugs. Within our business, we believe everyone deserves to be seen, heard and respected for who they are.

**But this isn't just about what we do as a business:** it's about who we are. We want all our colleagues to develop, grow, and succeed. We commit to making that happen, and to sharing and celebrating our successes as we bring together people from all backgrounds, geographies and perspectives.



# PSSM Lake Forest

is a center of excellence for parenteral drug development, offering technologies, capabilities including:

---

Expertise in parenteral drug development including nanoparticles including extractables and leachables

---

Expertise in process understanding to deliver innovative new parenteral dosage forms, to the patient and global markets

---


Experimental and data driven design of analytical methodology to facilitate in-depth understanding of pharmaceutical manufacturing processes and to ensure a drug's quality, efficacy and stability to support global clinical and commercial authorizations

---

Robust device engineering and development

---

Reverse engineering drug formulations and creating reliable production processes



Because this is  
an amazing  
workplace, we  
can do amazing  
things.

**Pfizer Lake Forest  
Careers are like no  
other.**

**Colleagues can explore  
diverse career opportunities  
all in one site, such as..**

- Analytical Chemistry
- Biology
- Commercial
- Digital Strategy
- Engineering & Devices
- Finance
- Formulations
- Manufacturing & Pilot Plant Development
- Operational Excellence
- Project Management
- Quality Assurance
- Regulatory Affairs
- Statistics
- Technology Transfer

Breakthroughs that  
change patients' lives



# We surveyed a group of recent hires across Pharmaceutical Sciences to ask:

**“What attracted you to come & work for Pfizer?”**

*here's what they had to say....*





# After their first year at Pfizer

## Colleague highlights

- I am **respected** for my opinion and contribution
- **Comfortable**, flexible, full of wide open spaces and lots of natural light
- I was **immediately** involved in high profile projects
- **Mentorship** from excellent scientists
- My department's involvement with outside charities is **meaningful**
- Got to steer work in a direction I felt **was impactful**
- I already feel useful and have an **impact**
- Nearby suburbs are rapidly growing and offer **diverse**, fun activities
- Midwesterners seem to **genuinely** care about each other
- Pay is at a **competitive** level



# What Can You Find at Lake Forest site?

Modern laboratories, pilot-scale manufacturing facilities and digital technology.

On site offerings such as Colleague Resource Group activities, health screenings, a private gym, full-service café, training sessions, and volunteer opportunities

PSSM fully support professional development through mentoring, coaching and bespoke training sessions.







**Winter:**  
The Planetarium  
Skiing  
The Art Institute of Chicago



**Spring:**  
Golfing  
Chicago Botanic Gardens  
The Capital Grille

**Milwaukee  
and Chicago  
are great in  
every season!**



**Summer:**  
Summerfest in Milwaukee  
The Renaissance Faire  
Air & Water Show



**Fall:**  
The Chicago Diner  
Biking the 606  
The Field Museum



# When Lake Forest employees were asked about their local favorites, they didn't hold back

Which type of pizza do you enjoy most?



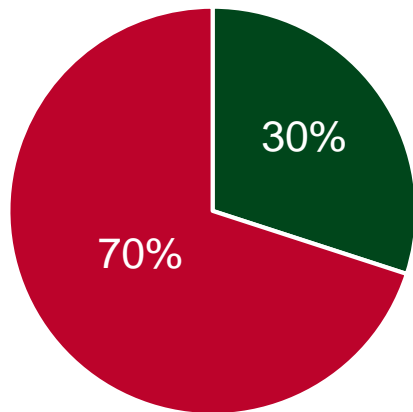
32% Deep dish  
33% Pan  
35% Anything else

Where do you prefer to live?



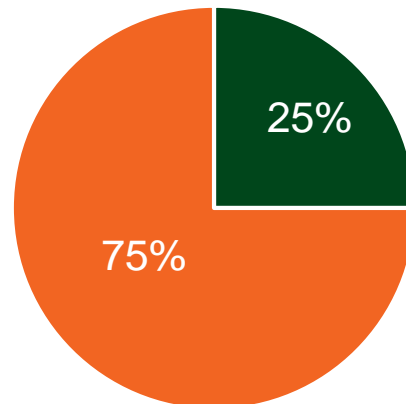
65% Suburbs  
22% City  
13% Rural

Basketball



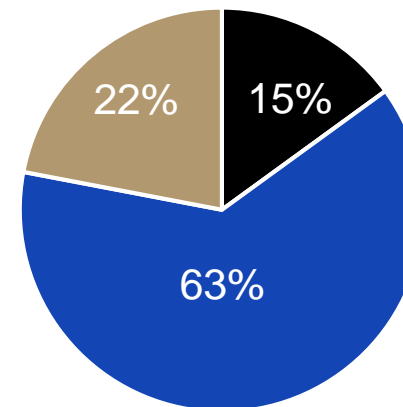
■ Bucks ■ Bulls

Football



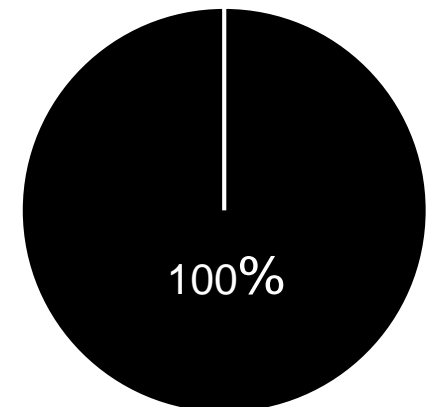
■ Packers ■ Bears

Baseball



■ White Sox ■ Cubs ■ Brewers

Hockey



■ Blackhawks



# Making a Difference in Our Communities\*

- Over \$200,000 donated to 165 non-profit organizations in IL and WI by Lake Forest employees and the Pfizer Foundation
- Colleagues spend countless hours volunteering in support of the local community, including many on-site opportunities
- Partner with more than 30 local non-profits through the Lake Forest campus and supported by the Pfizer Foundation
- Internships for students from high school to grad school to gain real work experience in disciplines supporting biomedical R&D

<https://www.visitlakecounty.org/>

*\*All values are for 2018/data on file*



# Corporate Responsibility

As a member of today's rapidly changing global community, we are striving to adapt to the evolving needs of society and contribute to the overall health and wellness of our world.

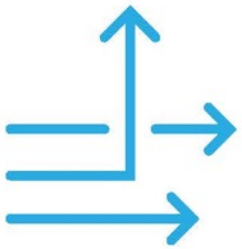
We are building partnerships in communities throughout the world to strengthen health systems, increase access to our medicines, and find sustainable solutions to the health challenges of today, and tomorrow.

Pfizer consistently is a leader in corporate philanthropic giving, and our commitment to corporate citizenship and community involvement dates to our founding in 1849.

Through Pfizer's partnership with the International Trachoma Initiative, we provide the Zithromax needed in the effort to eliminate blinding trachoma by 2020 and help preserve and restore the health and well-being of affected families worldwide.



# Our Values



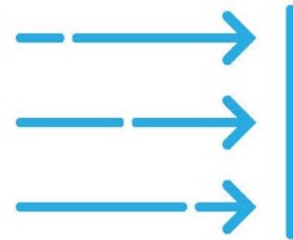
## Courage

Think big  
Speak up  
Be decisive



## Excellence

Focus on what matters  
Agree who does what  
Measure outcomes



## Equity

Be inclusive  
Act with integrity  
Reduce healthcare disparities



## Joy

Take pride  
Recognize one another  
Have fun