



Discover Pfizer

PSSM Groton

Pharmaceutical Sciences Small Molecule (& more)



Breakthroughs that
change patients' lives

A Center of Excellence for Drug Development

More than **2,600 scientists and R&D professionals** in Groton are critical to Pfizer's mission to be the premier innovative biopharmaceutical company. In close collaboration with Pfizer research teams across the globe, Connecticut colleagues work to fulfill Pfizer's purpose.

Our Purpose:

Breakthroughs
that change
patients' lives

Worldwide Research, Development and Medical

At Pfizer, we apply science and our global resources to bring treatments and therapies to people all over the globe. Every day, we work to advance wellness, prevention, treatments and cures that challenge the most feared diseases of our time. For more than 150 years, we've worked to make a difference for all who rely on us.

Research and Development is at the heart of fulfilling Pfizer's purpose as we work to translate advanced science and technologies into therapies that matter for patients in need.

We focus our resources in disease areas with the best chance of scientific and commercial success:



Oncology



Internal Medicine



Vaccines



**Inflammation &
Immunology**



Rare Disease

A lot goes into Making a Medicine

The story of bringing a medicine to life is no different than any other process of creation.

It requires innovation, imagination, and restless perseverance in the face of obstacles both expected and unforeseen.



Diversity & Inclusion

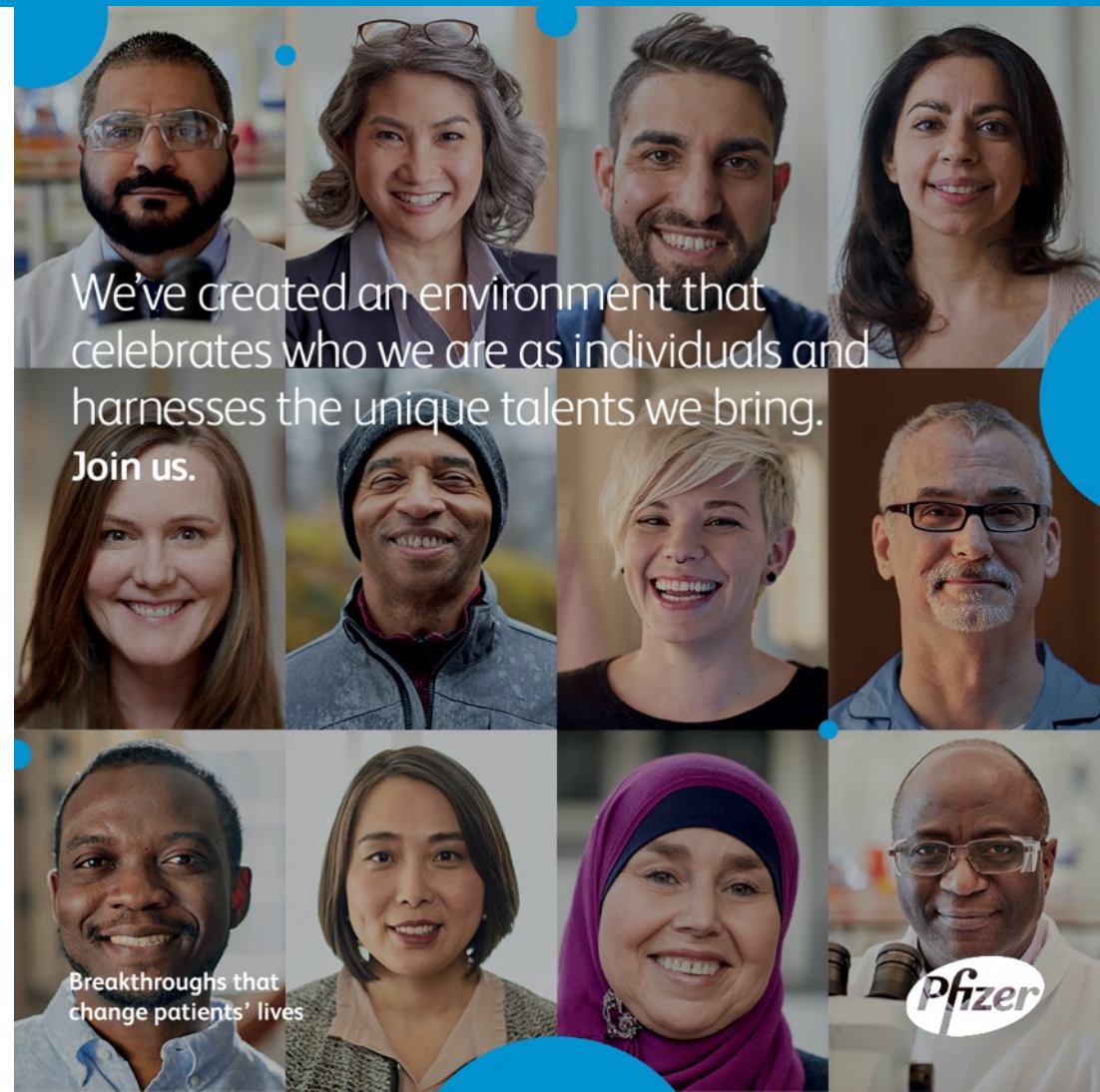
At Pfizer, we strive to be as diverse as the patients and communities we serve.

We realize that means not just attracting the best and brightest talent. But also ensuring our colleagues can thrive in an environment and culture where we champion Diversity and Inclusion every day, around the world.

Equity runs through everything we do.

We want all patients to have equal access to healthcare, and accessible and affordable drugs. Within our business, we believe everyone deserves to be seen, heard and respected for who they are.

But this isn't just about what we do as a business: it's about who we are. We want all our colleagues to develop, grow, and succeed. We commit to making that happen, and to sharing and celebrating our successes as we bring together people from all backgrounds, geographies and perspectives.



PSSM Groton

is a center of excellence for drug development, offering technologies, capabilities and talent

Synthesizing chemical compounds to drive the search for new medicines

Screening compounds for early clinical development

Predicting performance of drugs in clinical studies

Improving safety profiles in drug design

Inventing drug formulations and creating reliable production processes for clinical trial

Expertise in materials sciences, formulation design and process understanding to deliver innovative solid oral dosage forms, to the patient and global markets

Experimental and data driven design of analytical methodology to facilitate in-depth understanding of pharmaceutical manufacturing processes and to ensure a drug's quality, efficacy and stability to support global clinical and commercial authorizations

Use advanced manufacturing technology to manufacture novel drug products in our solid dose manufacturing facility for use in clinical trials

Pack, label and ship drugs to clinical trial sites around the world

Leveraging advanced digital skills to enable expedited drug development

Partner with regulatory and global supply lines for commercial launch

Embedded in the process from Discovery through to Launch

Perhaps the most inspiring part about working here is the people around you.

Pfizer Groton
Careers are like no other.

Colleagues can explore diverse career opportunities all in one site, such as..

- Biology
- Chemistry
- Digital Design
- Engineering
- Formulations
- Manufacturing
- Operational Excellence
- Project Management
- Quality Assurance
- Regulatory
- Statistics
- Supply Chain
- Technology

We surveyed a group of recent hires across Pharmaceutical Sciences to ask:

“What attracted you to come & work for Pfizer?”

here's what they had to say....



After their first year at Pfizer

Colleague highlights

- Instantly **respected** for my opinion and contribution
- **Comfortable**, flexible, full of wide-open spaces and lots of natural light
- I was **immediately** involved in high profile projects
- **Mentorship** from excellent scientists
- My department's involvement with outside charities is **meaningful**
- Got to steer work in a direction I felt **was impactful**
- I already feel useful and have an **impact**
- Nearby suburbs are rapidly growing and offer **diverse**, fun activities
- I **learned** a lot, gained broader knowledge
- Pay is at a **competitive** level



What Can You Find at Groton site?

Modern laboratories, advanced manufacturing facilities and digital technology

On site offerings such as Colleague Resource Group activities, health screenings, a private gym, full-service café, training sessions, and volunteer opportunities

PSSM fully support professional development through mentoring, coaching and bespoke training sessions.



Pfizer Groton Location

Groton, CT, is a growing New England community located on Fishers Island Sound between the Thames River and the Mystic River.

www.exploremoregroton.com

[Relocation Guide](#)

[Relocation Video](#)

We're positioned midway between New Haven and Providence along I-95, and just 50 miles south of Hartford. The major metro areas of Boston and New York City are easily accessible by car or rail.





**What makes
Southeastern
Connecticut
A great place to
live?**



Culture
Historic Museums
Garde Arts Center
Florence Griswold Museum

History
Historic Downtown Mystic
USS Nautilus
Frog Bridge

Get Active
Hammonasset Beach State Park
Bluff Point
Connecticut College Arboretum

Unwind
Farmers Markets
Connecticut Vineyards
Casinos & Nightlife

Amenities and Resources in Groton

The Pfizer Groton site, located on the Thames River in Groton, CT covers 3.8 million sq feet on more than 180 acres, housing the largest R&D laboratories in Pfizer's global research network. Working in state-of-the-art laboratories, scientists conduct research and development activities in support of Pfizer's biopharmaceutical research unit and business unit portfolios.

We invite you to explore our site's amenities, resources and colleague benefits

On-site Cafeteria and Café

On-site Bank: Scient Federal Credit Union

On-site Company Store

Healthy Groton Occupational Health & Wellness with On-site Clinic

Our conveniently located clinics provides a range of comprehensive medical services for both work-related and non-work related needs to our colleagues

On-site Fitness Center

Whether you are an avid exerciser or a beginner, the Healthy Pfizer Fitness Center provides an enjoyable, safe and comfortable workout environment. Our employees enjoy the onsite walking trails and running along the river streets. There are various teams at the Groton site including soccer and sailing.

Working / Nursing Mothers Lactation Program

Consultation and support to employees as well as lactation areas at several sites around campus.

Colleague Resource Groups (CRGs) and Community Engagement

CRGs are groups of colleagues who have come together as a community to drive diversity and inclusion work . They are a key part of Pfizer's strategy to create a more engaged and inclusive organization. Groton has a number of CRGs, events and ways colleagues can be involved.

Professional Development

Pfizer is keen in promoting professional and personal growth. To help our colleagues reach their educational goals, based on eligibility, we offer our colleagues with an educational assistance program.

Discounts, Matching Gifts, and Memberships

Colleagues are eligible for discounts and memberships with numerous vendors, matching gifts, volunteer grants, among others.

Making a Difference in Our Communities*

- In 2020 more than \$3.1 million donated to non-profit organizations in CT and RI by employees, Groton Labs and the Pfizer Foundation to support community vibrancy and STEM education.
- Colleagues spent 13,000+ hours volunteering in support of the local community
- More than 60 local non-profits received support through Groton Labs Community Grant awards
- Internships for college students to gain real work experience in disciplines supporting biomedical R&D
- 15 Pfizer scholarships awarded to CT and RI students for STEM education



Corporate Responsibility

As a member of today's rapidly changing global community, we are striving to adapt to the evolving needs of society and contribute to the overall health and wellness of our world.

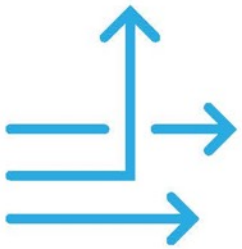
We are building partnerships in communities throughout the world to strengthen health systems, increase access to our medicines, and find sustainable solutions to the health challenges of today, and tomorrow.

Pfizer consistently is a leader in corporate philanthropic giving, and our commitment to corporate citizenship and community involvement dates to our founding in 1849.

Through Pfizer's partnership with the International Trachoma Initiative, we provide the Zithromax needed in the effort to eliminate blinding trachoma by 2020 and help preserve and restore the health and well-being of affected families worldwide.



Our Values



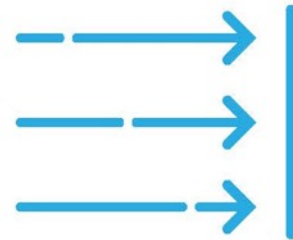
Courage

Think big
Speak up
Be decisive



Excellence

Focus on what matters
Agree who does what
Measure outcomes



Equity

Be inclusive
Act with integrity
Reduce healthcare disparities



Joy

Take pride
Recognize one another
Have fun